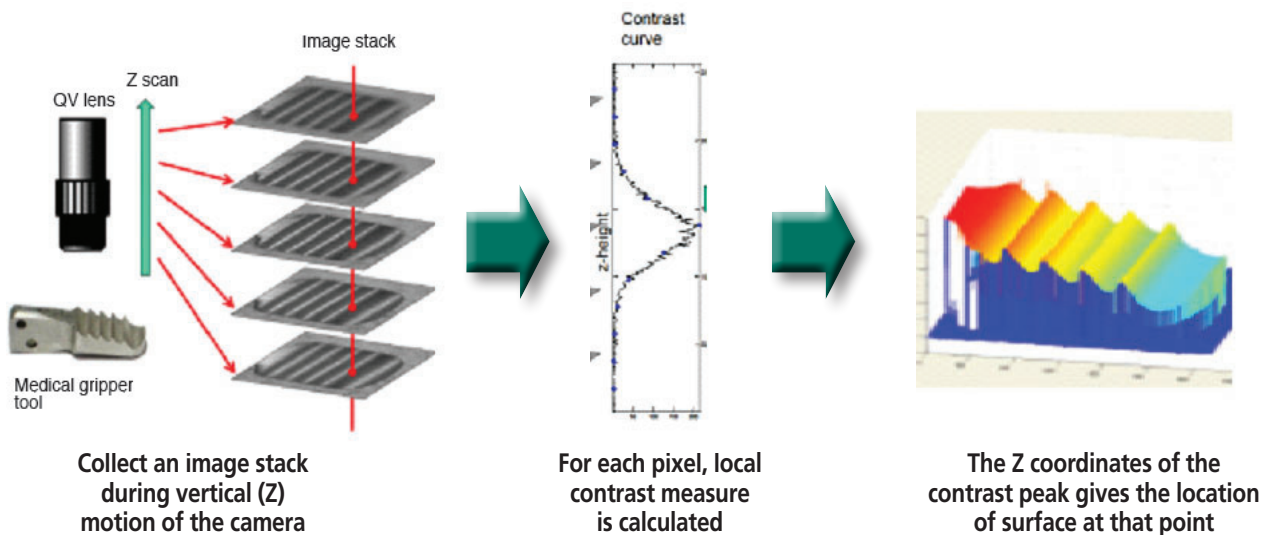


NEW PRODUCT INFORMATION

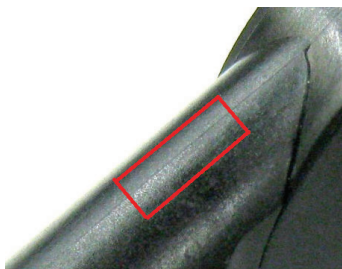
PFF (POINTS FROM FOCUS)

Introducing Mitutoyo's New High function analysis of Z Axis Optical Stitching

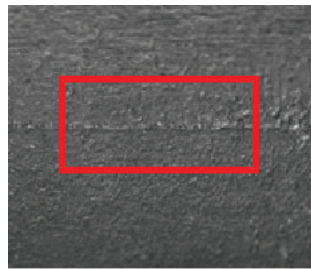
PFF Principle



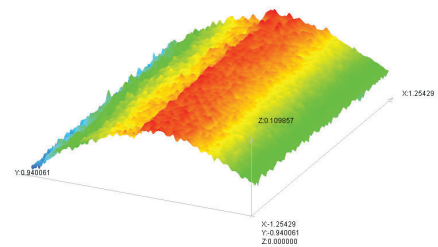
Example: Plastic Injections Molding (Parting Line Analysis)



Workpiece Appearance

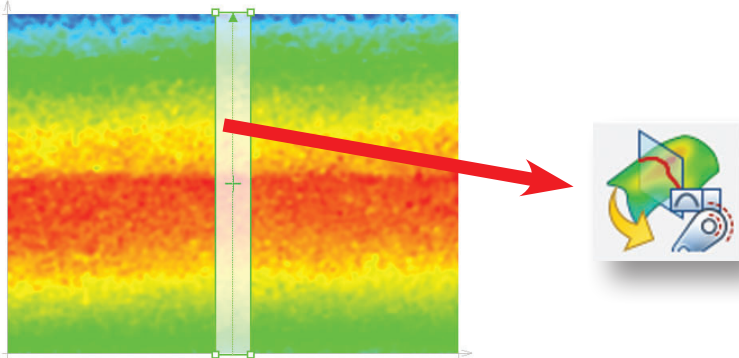


QV Image Observation

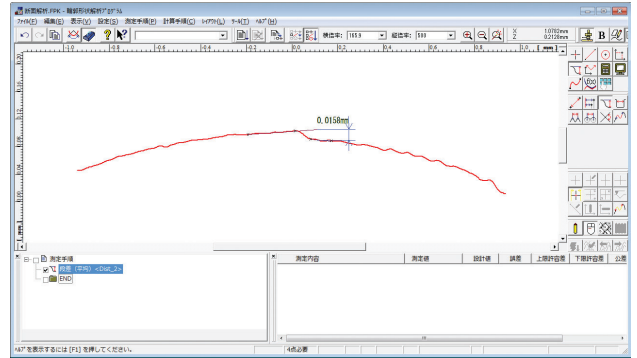


Example: Plastic Injections Molding (Parting Line Analysis)

Analysis example on extracting cross section image



Extracting specific cross section image by QV3DPAK



Analysis example by using FORMPAK-QV

Item	Specification
Corresponding QV system	QV-ELF, QV-APEX, HYPER-QV, ULTRA-QV Including Hybrid, TP, UMAP, WLI, STREAM system
Corresponding Optical Head	PRO Optical Head (Power Turret, B/W Camera)
QVPAK series version	QVPAK V10, QVPAK2000 V9.1, QVPAK8000 V10

Measurement Range of PFF		QV-HR2.5x	QV-5x	QV-HR10x	QV-25x
FOV (XY direction)					
Field of View	PT 1x	2.49x1.86 mm	1.24x0.93 mm	0.62x0.46 mm	0.25x0.19 mm
	PT 2x	1.24x0.93 mm	0.62x0.46 mm	0.31x0.23 mm	-
Measuring Range (Z direction)					
Z scanning range	Standard mode	21.0 mm (7.0 μm)	5.2 mm (1.7 μm)	2.3 mm (0.8 μm)	1.3 mm (0.5 μm)
(Z scanning pitch)	Wide range mode	40.6 mm (14.0 μm)	10.4 mm (3.5 μm)	4.6 mm (1.6 μm)	2.7 mm (0.9 μm)

- Coordinate Measuring Machines
- Vision Measuring Systems
- Form Measurement
- Optical Measuring
- Sensor Systems
- Test Equipment and Seismometers
- Digital Scale and DRO Systems
- Small Tool Instruments and Data Management

Mitutoyo America Corporation
www.mitutoyo.com

One Number to Serve You Better
1-888-MITUTOYO (1-888-648-8869)

M³ Solution Centers
Aurora, Illinois
(Corporate Headquarters)

Westford, Massachusetts
Huntersville, North Carolina
Mason, Ohio

Plymouth, Michigan
City of Industry, California
Birmingham, Alabama

Mitutoyo
Precision is our Profession

Note: All information regarding our products, and in particular the illustrations, drawings, dimensional and performance data contained in this printed matter as well as other technical data are to be regarded as approximate average values. We therefore reserve the right to make changes to the corresponding designs. The stated standards, similar technical regulations, descriptions and illustrations of the products were valid at the time of printing. In addition, the latest applicable version of our General Trading Conditions will apply. Only quotations submitted by ourselves may be regarded as definitive.

Mitutoyo products are subject to US Export Administration Regulations (EAR). Re-export or relocation of Mitutoyo products may require prior approval by an appropriate governing authority.

Trademarks and Registrations

Designations used by companies to distinguish their products are often claimed as trademarks. In all instances where Mitutoyo America Corporation is aware of a claim, the product names appear in initial capital or all capital letters. The appropriate companies should be contacted for more complete trademark and registration information.

We reserve the right to change specifications and prices without notice.