

Mitutoyo

IMTS2022

LIMITED TIME OFFER CNC CMM / Software Bonus Packages

Options: Gold Care Plus OR 1 day of part programming

Effective September 12, 2022 through December 23, 2022

CNC CMM PACKAGE PROMOTION



LIMITED TIME OFFER

CNC CMM / Software Bonus Packages

MCOSMOS v5.0 with MiCAT Planner

Options: Gold Care Plus OR 1 Day of Part Programming

CRYSTA-Apex V Series CMM with Gold Care PLUS

CRYSTA-Apex V models 500/700/900/1200 will come with Gold Care PLUS. There are 32 different CMM configurations with selectable probe options available with the Gold Care PLUS package, and features include:

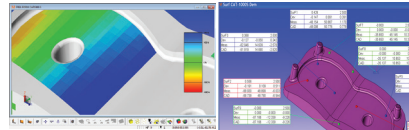
- 2 Year extended warranty
- Standard calibration
- Eco-Fix "S" or "L" (dependent upon CMM model)
- M2 or M3 Stylus Kit (dependent upon probe system)
- MeasurLink® Pro V9 software
- Air Dryer
- Power Conditioner
- Status monitor (supported with MTConnect standard)
- Quick Launcher (EZ Operator Inspection interface)
- Fixture Builder (stand-alone version)



MCOSMOS has three choices of module configuration. From the basic MCOSMOS-1 to the advanced MCOSMOS-3, choose a configuration for your measurement applications.

Geopak (Basic geometry module) provides an easy graphical console to the operator by the use of tool bars and windows which can be personalized to the operator's preference. Its graphically enhanced display provides step-by-step, on-screen wizards that prompt the operator, allowing even first-time users to create routines to measure parts.

CAT1000P significantly facilitates the programming of measurement tasks during the GEOPAK learn mode. All data for measuring parts and tolerance evaluations are taken accurately from the CAD model via pointing



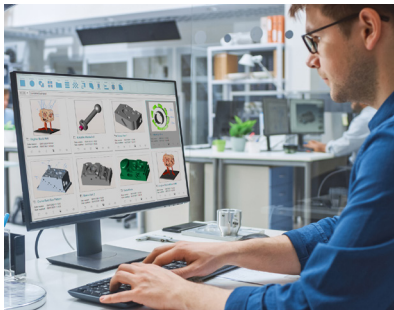
device (mouse, trackball, etc.) selection. The same principles apply for programming probe paths (clearance and measurement), while at the same time, using the nominal directly off the CAD model for tolerance comparison.

CAT1000S (3D freeform evaluation module) for the creation of measurement and evaluation routines of surfaces from a CAD model for nominal to actual comparison. Includes: automatic path generation (animated), collision checking and flexible reporting formats.

MCOSMOS Coordinate Measuring Machine Software				
	CNC			Manual
	MCOSMOS-1	MCOSMOS-2	MCOSMOS-3	MCOSMOS-M
GEOPAK	●	●	●	●
CAT1000P	▲	●	●	—
CAT1000S	▲	●	●	▲
Scanpak	—	▲	●	▲
Geopak	▲	▲	▲	—
MAFIS*	▲	▲	▲	—

● Standard ▲ Option — Not supported * Requires Scanpak

1 Day Part Programming



MiCAT Planner is Mitutoyo's latest software development for fast and efficient CMM part programming. Operation of MiCAT Planner is easy and intuitive. Programs are made with a few mouse clicks in minutes instead of hours or days.

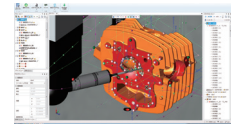
WORKFLOW:

- 1) Load design model
- 2) Select CMM system configuration
- 3) Part placement via virtual alignment
- 4) Measurement program
- 5) Generate MCOSMOS Geopak part program

In order to generate a measurement plan, GD&T information attached to the 3D Design Model is needed. Design Model formats marked "w/PMI" will read GD&T information created in the CAD system and stored in the Design Model file. Design Model formats without PMI can be annotated with GD&T in MiCAT Planner.

Design Model Support:

- Siemens NX w/PMI
- CATIA V5 w/PMI
- CREO (PRO/E) w/PMI
- SOLIDWORKS w/PMI
- ACIS (SAT)



mcosmos

MiCAT
Mitutoyo's Latest Coordinate Measuring Machine Software
the standard in world metrology software



Mitutoyo

Mitutoyo America Corporation
www.mitutoyo.com

One Number to Serve You Better
1-888-MITUTOYO (1-888-648-8869)

IMTS2022
Visit us at booth #135215

Offer valid 9/12/2022 ~ 12/23/2022

We reserve the right to change prices and specifications without notice. Not valid with any other offer or promotion. This promotion is for US market only. Please refer to terms and conditions for additional information.