



THE GOLD STANDARD

Mitutoyo Quality

The logo features the text "Mitutoyo Quality" in a clean, sans-serif font. A stylized, white, calligraphic flourish is positioned behind the text, starting under "Mitutoyo" and extending under "Quality". The flourish consists of two main curved segments that meet at the bottom, creating a shape reminiscent of a stylized 'M' or a calligraphic signature.



CRYSTA-APEX S CNC SERIES

Gold Care Program*

- A “Second Year” Extended Warranty
- Two-year “Bronze” Calibration Agreement
- Five-year Software Technical Phone Support
- One seat at Mitutoyo Institute of Metrology Class**
- MeasurLink® Pro Edition Quality Data Management Software
- MITUTOYO Eco-Fix® Fixture System
- MITUTOYO Starter Stylus Kit

*Complete program details are available upon request. ** New addition to Gold Care.

A "SECOND YEAR" EXTENDED WARRANTY*

Mitutoyo built products are among the finest in the industry. With significant uptime and low failure rates, you can have confidence in your capital equipment investment. To reinforce our commitment to our customers, we are offering a total of 24 months parts and labor warranty on selected CMM/Vision units.



**Refer to warranty terms and conditions*



TWO-YEAR BRONZE CALIBRATION AGREEMENT

Mitutoyo Service Agreements are designed to provide responsive and reliable service. Our service engineers are fully trained in the operation and servicing of Mitutoyo CMM/Vision products, so as to provide the very best service to our customers. Not only does Mitutoyo offer A2LA accredited service on all capital equipment, Mitutoyo is one of the only companies in the United States whose field service and calibration labs offer ISO 17025 accredited services.

Field Service Agreements cover the following:

- One Annual recalibration/Check-up per year for the duration of the agreement
- A2LA Accredited Calibration and Certification
- All travel related expenses are included with this agreement, such as hotel, meals, and local travel (airfare is not included)
- A Field Service Calibration includes machine cleaning and inspection of all critical mechanics; along with linear, volumetric and repeatability tests





FIVE-YEAR SOFTWARE TECHNICAL PHONE SUPPORT

If your machine goes down, you need answers fast. Mitutoyo leads the industry with responsive and knowledgeable technical phone support for every Gold Care CMM/Vision purchase. Customers and distributors alike can call our software application support professionals. Our staff of highly-skilled engineers and technicians possess a wealth of knowledge on all Mitutoyo products and can provide detailed product information, answer your specific technical request and offer many types of application guidance. Often they will connect with you to gain a bigger picture and answer your specific programming or operational issue.

Many questions can be answered at our KnowledgeBase for capital equipment applications (i.e. Frequently Asked Questions). Visit our service page at <http://kb.mitutoyo.com/Capital>. Call our technical support staff at **888-648-8869/630-820-9785**. Or email our support staff at software.support@mitutoyo.com.

Of course, comprehensive introductory training is supplied with your Mitutoyo CMM/Vision purchase. Additionally our staff can help you tailor specific training through our nationwide set of Product Instructors or in conjunction with the comprehensive courses developed by our Mitutoyo Institute of Metrology.



MEASURLINK® REAL-TIME PROFESSIONAL EDITION

REAL-TIME DATA COLLECTION

MeasurLink Real-Time performs a data acquisition by enabling you to connect and acquire data from virtually any measuring device. It supports a full range of metrology technology, including calipers, micrometers, indicators, CMMs, Vision systems and more.

REAL-TIME PROFESSIONAL EDITION

Designed for customers who want to acquire and analyze data in real-time and use variable inspection to maximize production and minimize defects. It has functions that allow the user to create Parts, Characteristics (with nominal and tolerance) and Traceability lists. The data collection interface provides real-time graphics for Run charts, Control charts, Histograms and Statistics. Standard views include Datasheet (observations and charts), Classic View (chart windows), and 2D view (part images with callouts that include charts and statistical data) along with an especially customizable Info View and additional Manager views. Full reporting template functionality and Data Export is also provided.

DDE CONNECTION

DDE connection enables customers to connect and acquire data from Measuring Systems via native integration. ASCII and QMD (xml-based) file import are also supported.

IMPORT TEMPLATES

Easily create an import template that maps data in a text file to MeasurLink information. Templates are saved to the database for everyone to use and can be added as data sources to data collection stations. When set up as a data source, import templates are readily available to the operator, or periodic imports can be executed.

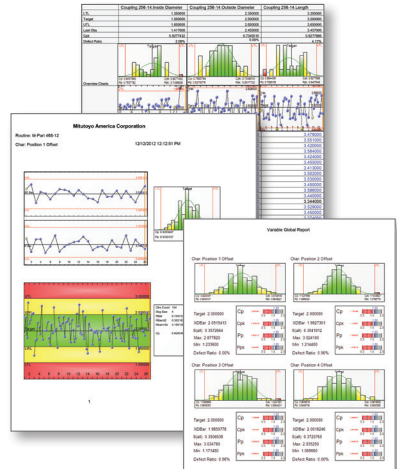


DIRECT DATA TRANSFER

Collect data into MeasurLink from Mitutoyo capital equipment running Mitutoyo Software that is MeasurLink enabled. This provides a tighter and more robust interface than importing data from files.

FILTER DATA

All data collected within a Real-Time run is related. Often, especially for runs containing a large volume of subgroups, requests are made for subsets of data that are further related from the entire runs' population. MeasurLink provides robust filtering capabilities to comply with these requests.



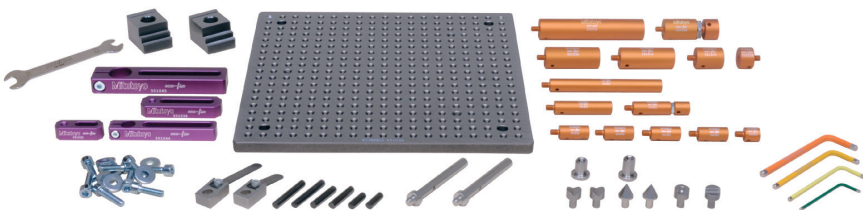
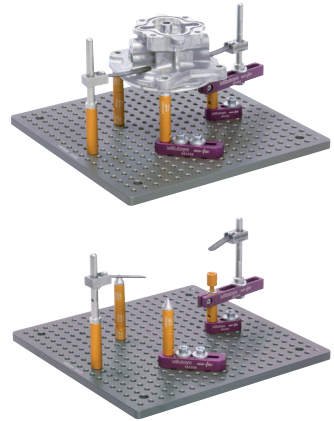
MeasurLink®
An Integrated Solution for Quality Data Management

www.measurlink.com

MITUTOYO ECO-FIX KIT FIXTURE SYSTEMS

The Mitutoyo Eco-Fix Clamping System brings a new concept in time-saving and lower cost solutions for your modular CMM and Vision product workholding setups. These systems work well across several different part sizes/types and environments. The design combines operational modularity advances with lower cost solutions for your workholding requirements. This can be found both in the reduction or elimination of hard fixturing costs and labor-saving setup time. This system is comprised of well-marked, color-coded components that are designed to simplify your part measurement requirements. Magnetic or threaded fastening points deliver fast, plug-and-play connectivity. First-time fixturing of jobs can be established and reconfigured in just a matter of minutes for quick turnaround for future part measurement. Or, as needed, a few fixtures can be built and stored to meet all of your common part measurement requirements. Base plates are hard-coated and other components are machined from the toughest of materials, adding durability to the mix of user benefits of this system for years to come.

Our entry-level Mitutoyo Eco-Fix Kit S version is comprised of a 250mm x 250mm base plate footprint and 59 total components in the system. The Eco-Fix Kit L is a larger version and built for more complex part fixturing applications (measuring 500mm x 400mm in base plate footprint and a total of 98 total components in the system).



MITUTOYO ECO-FIX KIT L		
PART #	QTY	PART NAME
551024	2	LOCATION PIN Ø 12 MM X 13 MM
551025	2	LOCATION PIN Ø 12 MM X 25 MM
551026	2	LOCATION PIN Ø 12 MM X 50 MM
551027	2	LOCATION PIN Ø 12 MM X 100 MM
551028	2	LOCATION PIN Ø 20 MM X 13 MM
551029	2	LOCATION PIN Ø 20 MM X 25 MM
551030	2	LOCATION PIN Ø 20 MM X 50 MM
551031	2	LOCATION PIN Ø 20 MM X 100 MM
551032	3	CLAMPING CLAW ECO-FIX
551033	1	BASE PLATE 500 MM X 400 MM
551035	2	RECEIVER BRACKET SMALL
551036	1	RECEIVER BRACKET LARGE
551040	2	ADJUSTABLE LOCATION PIN Ø 20 MM
551041	2	ADJUSTABLE LOCATION PIN Ø 12 MM
551042	3	LOCATION PIN Ø 12 MM WITH BORE 6 MM
551043	3	LOCATION PIN Ø 20 MM WITH BORE 8 MM
551044	1	RECEIVER BRACKET L = 90 MM, Ø 12 MM
551045	2	RECEIVER BRACKET L = 120 MM, Ø 20 MM
550716	3	STRAIGHT PIN WITH THREAD
550279	2	SPRING CLIP, Ø 8 MM, L = 60 MM
550554	1	SPRING CLIP, Ø 8 MM, L = 40 MM
550262	2	V-BLOCK MINI
550261	2	CONE RECEIVER MINI
550250	1	STOPPER ELEMENT MINI
550247	1	BACK SQUARE MINI
550058	2	V-BLOCK
550365	2	CONE RECEIVER
550982	1	STOPPER ELEMENT
550248	1	BACK SQUARE
550888	2	STRAIGHT PIN Ø 6 MM X 20 MM
550889	2	STRAIGHT PIN Ø 6 MM X 30 MM
550890	2	STRAIGHT PIN Ø 6 MM X 40 MM
550000	2	STRAIGHT PIN Ø 8 MM X 30 MM
550001	2	STRAIGHT PIN Ø 8 MM X 50 MM
550002	2	STRAIGHT PIN Ø 8 MM X 65 MM
551046	1	SLOTTED NUT FOR RECEIVER BRACKET H = 12 MM
551047	2	SLOTTED NUT FOR RECEIVER BRACKET H = 15 MM
551050	1	ALLEN KEY 2 MM
551051	1	ALLEN KEY 3 MM
551052	1	ALLEN KEY 4 MM
551053	1	ALLEN KEY 5 MM
551504	1	DOUBLE OPEN-ENDED SPANNER SW10
550591	12	WASHER D = 6,4 MM / D = 17 MM
550110	6	CYLINDER HEAD SCREW M6 X 20 MM
550563	6	CYLINDER HEAD SCREW M6 X 25 MM

MITUTOYO ECO-FIX KIT S		
PART #	QTY	PART NAME
551024	1	LOCATION PIN Ø 12 MM X 13 MM
551025	1	LOCATION PIN Ø 12 MM X 25 MM
551026	1	LOCATION PIN Ø 12 MM X 50 MM
551027	1	LOCATION PIN Ø 12 MM X 100 MM
551028	1	LOCATION PIN Ø 20 MM X 13 MM
551029	1	LOCATION PIN Ø 20 MM X 25 MM
551030	1	LOCATION PIN Ø 20 MM X 50 MM
551031	1	LOCATION PIN Ø 20 MM X 100 MM
551032	2	CLAMPING CLAW ECO-FIX
551034	1	BASE PLATE 250 MM X 250 MM
551035	1	RECEIVER BRACKET SMALL
551036	1	RECEIVER BRACKET LARGE
551040	1	ADJUSTABLE LOCATION PIN Ø 20 MM
551041	1	ADJUSTABLE LOCATION PIN Ø 12MM
551042	3	LOCATION PIN Ø 12 MM W/ BORE 6 MM
551044	1	RECEIVER BRACKET L = 90; Ø 12 MM
551045	1	RECEIVER BRACKET L = 120; Ø 20 MM
550716	2	STRAIGHT PIN WITH THREAD
550279	1	SPRING CLIP, Ø 8 MM, L = 60 MM
550554	1	SPRING CLIP, Ø 8 MM, L = 40 MM
550262	2	V-BLOCK MINI
550261	2	CONE RECEIVER MINI
550250	1	STOPPER ELEMENT MINI
550247	1	BACK SQUARE MINI
550888	2	STRAIGHT PIN Ø 6 MM X 20 MM
550889	2	STRAIGHT PIN Ø 6 MM X 30 MM
550890	2	STRAIGHT PIN Ø 6 MM X 40 MM
551046	1	SLOTTED NUT FOR RECEIVER BRACKET H = 12 MM
551047	1	SLOTTED NUT FOR RECEIVER BRACKET H = 15 MM
551050	1	ALLEN KEY 2 MM
551051	1	ALLEN KEY 3 MM
551052	1	ALLEN KEY 4 MM
551053	1	ALLEN KEY 5 MM
551504	1	DOUBLE OPEN-ENDED SPANNER SW10
550591	8	WASHER Ø 6,4 MM X Ø 17 MM
550110	6	CYLINDER HEAD SCREW M6 X 20
550563	2	CYLINDER HEAD SCREW M6 X 25



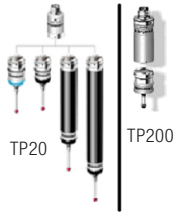
MITUTOYO STARTER STYLUS KIT

The Mitutoyo Starter Stylus Kits specified for the Gold Care Program enable you to develop probing solutions for applications on your CMM or Vision system. Mitutoyo ruby-tipped probes can offer the combination of performance and versatility for your hardest measurement applications due to its overall hardness/low density design (helps keep the probe tip as small as possible for application diversity) and ability to eliminate false triggers caused by CMM movement/vibration. *(Additional probe styles and configurations are also available. Please contact your factory representative.)*

TWO GROUP DESIGNS ARE OFFERED*

- A** Mitutoyo M2 Starter Stylus Kit - Total of four ruby tipped/steel shafted probes (various ball dimensions and shaft lengths), two probe extensions and a pin spinner
- B** Mitutoyo M3 Starter Stylus Kit- Total of five ruby tipped/steel shafted probes (various ball dimensions and shaft lengths), two probe extensions and a pin spinner

*Machine and/or probe dependent.



K651376 - MITUTOYO M2 STARTER STYLUS KIT							
PART #	QTY	DESCRIPTION	Ø(MM)	L(MM)	ML(MM)	WT.(G)	#
	1	WOODEN BOX	-	-	-	-	-
K651012	1	STYLUS STEEL-RUBY M2	1	10	4.5	0.23	1
K651019	1	STYLUS STEEL-RUBY M2	2	20	14	0.43	2
K651021	1	STYLUS STEEL-RUBY M2	3	20	17.5	0.51	3
K651022	1	STYLUS STEEL-RUBY M2	4	20	20	0.51	4
K651038	1	EXTENSION STEEL M2	-	10	-	0.41	5
K651039	1	EXTENSION STEEL M2	-	20	-	0.96	6
K651223	2	PIN SPANNER	1.2	23	-	0.51	7



TP20 and TP200 Probes are not included with the M2 Stylus Kit.



K651380 - MITUTOYO M3 STARTER STYLUS KIT							
PART #	QTY	DESCRIPTION	Ø(MM)	L(MM)	ML(MM)	WT.(G)	#
	1	WOODEN BOX	-	-	-	-	-
K651146	1	STYLUS STEEL-RUBY M3	1	21	4	1.05	1
K651147	1	STYLUS STEEL-RUBY M3	2	21	8	1.06	2
K651148	1	STYLUS STEEL-RUBY M3	3	21	12	0.96	3
K651151	1	STYLUS STEEL-RUBY M3	4	31	27	1.78	4
K651152	1	STYLUS STEEL-RUBY M3	5	33.5	33.5	2.61	5
K651157	1	EXTENSION STEEL M3	-	20	-	1.58	6
K651159	1	EXTENSION STEEL M3	-	25	-	3.16	7
K651223	2	PIN SPANNER	1.2	23	-	0.51	8



SP25 Probe is not included with the M3 Stylus Kit.



MITUTOYO INSTITUTE OF METROLOGY

The Mitutoyo Institute of Metrology provides training and metrology seminars on topics ranging from basic principles of metrology to advanced QC studies. We are the premier educational facility within the quality field. Our seminars are led by experienced, industry-leading professionals at locations across the US. You can even arrange for a seminar to be held at your own facility. All courses are approved for CEU credits (Continued Education Units) and include a certificate of attendance.

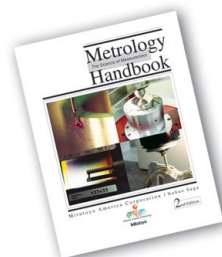
To register, please call the Education Department at **888-MITUTOYO** or email: mim@mitutoyo.com

All seminars begin at 9:00 am and conclude at 4:00 pm. Lunch is provided with every seminar, along with beverages and refreshments.

To view a current schedule visit: <http://www.mitutoyo.com/support/mitutoyo-institute-of-metrology/>

Your Gold Care issued certificate is for our core course, "Dimensional Metrology", a two day class available at one of our many M³ Solution Centers.

If you are unable to attend your Gold Care issued course, you can redeem the certificate for a copy of our metrology handbook. For further information please call the Education Department at **888-MITUTOYO** or email: mim@mitutoyo.com





CRYSTA-PLUS MANUAL SERIES

Gold Care Program*

- A "Second Year" Extended Warranty
- Five-year Software Technical Phone Support
- One seat at Mitutoyo Institute of Metrology Class**
- MITUTOYO Eco-Fix® Fixture System
- MITUTOYO Starter Stylus Kit

A “SECOND YEAR” EXTENDED WARRANTY*

Mitutoyo built products are among the finest in the industry. With significant uptime and low failure rates, you can have confidence in your capital equipment investment. To reinforce our commitment to our customers, we are offering a total of 24 months parts and labor warranty on selected CMM/Vision units.



**Refer to warranty terms and conditions*



FIVE-YEAR SOFTWARE TECHNICAL PHONE SUPPORT

If your machine goes down, you need answers fast. Mitutoyo leads the industry with responsive and knowledgeable technical phone support for every Gold Care CMM/Vision purchase. Customers and distributors alike can call our software application support professionals. Our staff of highly-skilled engineers and technicians possess a wealth of knowledge on all Mitutoyo products and can provide detailed product information, answer your specific technical request and offer many types of application guidance. Often they will connect with you to gain a bigger picture and answer your specific programming or operational issue.

Many questions can be answered at our KnowledgeBase for capital equipment applications (i.e. Frequently Asked Questions). Visit our service page at <http://kb.mitutoyo.com/Capital>. Call our technical support staff at **888-648-8869/630-820-9785**. Or email our support staff at software.support@mitutoyo.com.

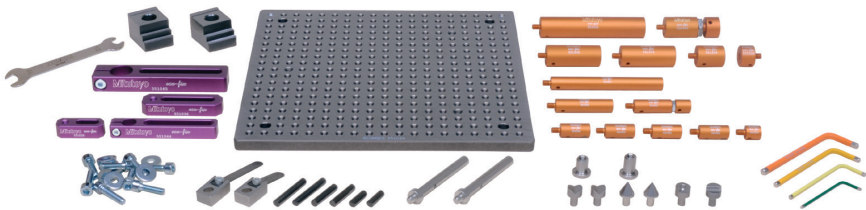
Of course, comprehensive introductory training is supplied with your Mitutoyo CMM/Vision purchase. Additionally our staff can help you tailor specific training through our nationwide set of Product Instructors or in conjunction with the comprehensive courses developed by our Mitutoyo Institute of Metrology.



MITUTOYO ECO-FIX KIT FIXTURE SYSTEM

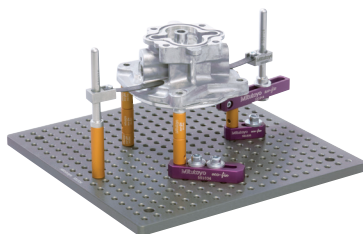
The Mitutoyo Eco-Fix Clamping System brings a new concept in time-saving and lower cost solutions for your modular CMM and Vision product workholding setups. These systems work well across several different part sizes/types and environments. The design combines operational modularity advances with lower cost solutions for your workholding requirements. This can be found both in the reduction or elimination of hard fixturing costs and labor-saving setup time. This system is comprised of well-marked, color-coded components that are designed to simplify your part measurement requirements. Magnetic or threaded fastening points deliver fast, plug-and-play connectivity. First-time fixturing of jobs can be established and reconfigured in just a matter of minutes for quick turnaround for future part measurement. Or, as needed, a few fixtures can be built and stored to meet all of your common part measurement requirements. Base plates are hard-coated and other components are machined from the toughest of materials, adding durability to the mix of user benefits of this system for years to come.

Our entry-level Mitutoyo Eco-Fix Kit S version is comprised of a 250mm x 250mm base plate footprint and 59 total components in the system.



MITUTOYO ECO-FIX KIT S

PART #	QTY	PART NAME
551024	1	LOCATION PIN Ø 12 MM X 13 MM
551025	1	LOCATION PIN Ø 12 MM X 25 MM
551026	1	LOCATION PIN Ø 12 MM X 50 MM
551027	1	LOCATION PIN Ø 12 MM X 100 MM
551028	1	LOCATION PIN Ø 20 MM X 13 MM
551029	1	LOCATION PIN Ø 20 MM X 25 MM
551030	1	LOCATION PIN Ø 20 MM X 50 MM
551031	1	LOCATION PIN Ø 20 MM X 100 MM
551032	2	CLAMPING CLAW ECO-FIX
551034	1	BASE PLATE 250 MM X 250 MM
551035	1	RECEIVER BRACKET SMALL
551036	1	RECEIVER BRACKET LARGE
551040	1	ADJUSTABLE LOCATION PIN Ø 20 MM
551041	1	ADJUSTABLE LOCATION PIN Ø 12MM
551042	3	LOCATION PIN Ø 12 MM W/ BORE 6 MM
551044	1	RECEIVER BRACKET L = 90; Ø 12 MM
551045	1	RECEIVER BRACKET L = 120; Ø 20 MM
550716	2	STRAIGHT PIN WITH THREAD
550279	1	SPRING CLIP, Ø 8 MM, L = 60 MM
550554	1	SPRING CLIP, Ø 8 MM, L = 40 MM
550262	2	V-BLOCK MINI
550261	2	CONE RECEIVER MINI
550250	1	STOPPER ELEMENT MINI
550247	1	BACK SQUARE MINI
550888	2	STRAIGHT PIN Ø 6 MM X 20 MM
550889	2	STRAIGHT PIN Ø 6 MM X 30 MM
550890	2	STRAIGHT PIN Ø 6 MM X 40 MM
551046	1	SLOTTED NUT FOR RECEIVER BRACKET H = 12 MM
551047	1	SLOTTED NUT FOR RECEIVER BRACKET H = 15 MM
551050	1	ALLEN KEY 2 MM
551051	1	ALLEN KEY 3 MM
551052	1	ALLEN KEY 4 MM
551053	1	ALLEN KEY 5 MM
551504	1	DOUBLE OPEN-ENDED SPANNER SW10
550591	8	WASHER Ø 6,4 MM X Ø 17 MM
550110	6	CYLINDER HEAD SCREW M6 X 20
550563	2	CYLINDER HEAD SCREW M6 X 25





MITUTOYO STARTER STYLUS KIT

The Mitutoyo Starter Stylus Kit specified for the Gold Care Program enables you to develop probing solutions for applications on your CMM or Vision system. Mitutoyo ruby-tipped probes can offer the combination of performance and versatility for your hardest measurement applications due to its overall hardness/low density design (helps keep the probe tip as small as possible for application diversity) and ability to eliminate false triggers caused by CMM movement/vibration. *(Additional probe styles and configurations are also available. Please contact your factory representative.)*

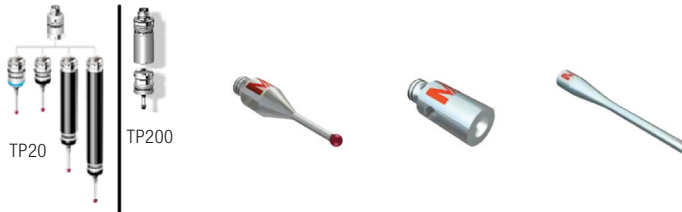
- Mitutoyo M2 Starter Stylus Kit - Total of four ruby tipped/steel shafted probes (various ball dimensions and shaft lengths), two probe extensions and a pin spinner



K651376 - MITUTOYO M2 STARTER STYLUS KIT

PART #	QTY	DESCRIPTION	Ø(MM)	L(MM)	ML(MM)	WT.(G)	#
	1	WOODEN BOX	-	-	-	-	-
K651012	1	STYLUS STEEL-RUBY M2	1	10	4.5	0.23	1
K651019	1	STYLUS STEEL-RUBY M2	2	20	14	0.43	2
K651021	1	STYLUS STEEL-RUBY M2	3	20	17.5	0.51	3
K651022	1	STYLUS STEEL-RUBY M2	4	20	20	0.51	4
K651038	1	EXTENSION STEEL M2	-	10	-	0.41	5
K651039	1	EXTENSION STEEL M2	-	20	-	0.96	6
K651223	2	PIN SPANNER	1.2	23	-	0.51	7

TP20 and TP200 Probes are not included with the M2 Stylus Kit.





MITUTOYO INSTITUTE OF METROLOGY

The Mitutoyo Institute of Metrology provides training and metrology seminars on topics ranging from basic principles of metrology to advanced QC studies. We are the premier educational facility within the quality field. Our seminars are led by experienced, industry-leading professionals at locations across the US. You can even arrange for a seminar to be held at your own facility. All courses are approved for CEU credits (Continued Education Units) and include a certificate of attendance.

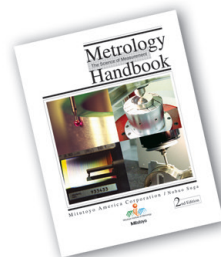
To register, please call the Education Department at **888-MITUTOYO** or email: mim@mitutoyo.com

All seminars begin at 9:00 am and conclude at 4:00 pm. Lunch is provided with every seminar, along with beverages and refreshments.

To view a current schedule visit: <http://www.mitutoyo.com/support/mitutoyo-institute-of-metrology/>

Your Gold Care issued certificate is for our core course, "Dimensional Metrology", a two day class available at one of our many M³ Solution Centers.

If you are unable to attend your Gold Care issued course, you can redeem the certificate for a copy of our metrology handbook. For further information please call the Education Department at **888-MITUTOYO** or email: mim@mitutoyo.com





QV APEX SERIES

Gold Care Program*

- A “Second Year” Extended Warranty
- Two-year “Bronze” Calibration Agreement
- Five-year Software Technical Phone Support
- One seat at Mitutoyo Institute of Metrology Class**
- MeasurLink® Pro Edition Quality Data Management Software
- MITUTOYO Opti-Fix Starter Fixture Kit

*Complete program details are available upon request. ** New addition to Gold Care.

A “SECOND YEAR” EXTENDED WARRANTY*

Mitutoyo built products are among the finest in the industry. With significant uptime and low failure rates, you can have confidence in your capital equipment investment. To reinforce our commitment to our customers, we are offering a total of 24 months parts and labor warranty on selected CMM/Vision units.



**Refer to warranty terms and conditions*



TWO-YEAR BRONZE CALIBRATION AGREEMENT

Mitutoyo Service Agreements are designed to provide responsive and reliable service. Our service engineers are fully trained in the operation and servicing of Mitutoyo CMM/Vision products, so as to provide the very best service to our customers. Not only does Mitutoyo offer A2LA accredited service on all capital equipment, Mitutoyo is one of the only companies in the United States whose field service and calibration labs offer ISO 17025 accredited services.

Field Service Agreements cover the following:

- One Annual recalibration/Check-up per year for the duration of the agreement
- A2LA Accredited Calibration and Certification
- All travel related expenses are included with this agreement, such as hotel, meals, and local travel (airfare is not included)
- A Field Service Calibration includes machine cleaning and inspection of all critical mechanics; along with linear, volumetric and repeatability tests





FIVE-YEAR SOFTWARE TECHNICAL PHONE SUPPORT

If your machine goes down, you need answers fast. Mitutoyo leads the industry with responsive and knowledgeable technical phone support for every Gold Care CMM/Vision purchase. Customers and distributors alike can call our software application support professionals. Our staff of highly-skilled engineers and technicians possess a wealth of knowledge on all Mitutoyo products and can provide detailed product information, answer your specific technical request and offer many types of application guidance. Often they will connect with you to gain a bigger picture and answer your specific programming or operational issue.

Many questions can be answered at our KnowledgeBase for capital equipment applications (i.e. Frequently Asked Questions). Visit our service page at <http://kb.mitutoyo.com/Capital>. Call our technical support staff at **888-648-8869/630-820-9785**. Or email our support staff at software.support@mitutoyo.com.

Of course, comprehensive introductory training is supplied with your Mitutoyo CMM/Vision purchase. Additionally our staff can help you tailor specific training through our nationwide set of Product Instructors or in conjunction with the comprehensive courses developed by our Mitutoyo Institute of Metrology.



MEASURLINK® REAL-TIME PROFESSIONAL EDITION

REAL-TIME DATA COLLECTION

MeasurLink Real-Time performs a data acquisition by enabling you to connect and acquire data from virtually any measuring device. It supports a full range of metrology technology, including calipers, micrometers, indicators, CMMs, Vision systems and more.

REAL-TIME PROFESSIONAL EDITION

Designed for customers who want to acquire and analyze data in real-time and use variable inspection to maximize production and minimize defects. It has functions that allow the user to create Parts, Characteristics (with nominal and tolerance) and Traceability lists. The data collection interface provides real-time graphics for Run charts, Control charts, Histograms and Statistics. Standard views include Datasheet (observations and charts), Classic View (chart windows), and 2D view (part images with callouts that include charts and statistical data) along with an especially customizable Info View and additional Manager views. Full reporting template functionality and Data Export is also provided.

DDE CONNECTION

DDE connection enables customers to connect and acquire data from Measuring Systems via native integration. ASCII and QMD (xml-based) file import are also supported.

IMPORT TEMPLATES

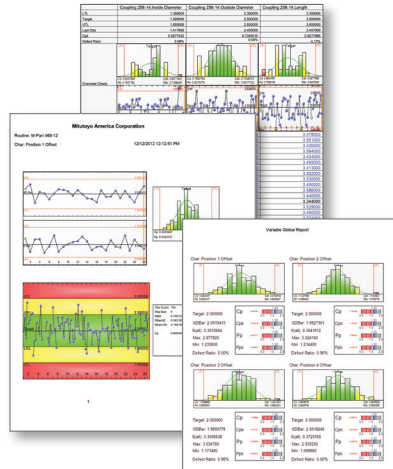
Easily create an import template that maps data in a text file to MeasurLink information. Templates are saved to the database for everyone to use and can be added as data sources to data collection stations. When set up as a data source, import templates are readily available to the operator, or periodic imports can be executed.

DIRECT DATA TRANSFER

Collect data into MeasurLink from Mitutoyo capital equipment running Mitutoyo Software that is MeasurLink enabled. This provides a tighter and more robust interface than importing data from files.

FILTER DATA

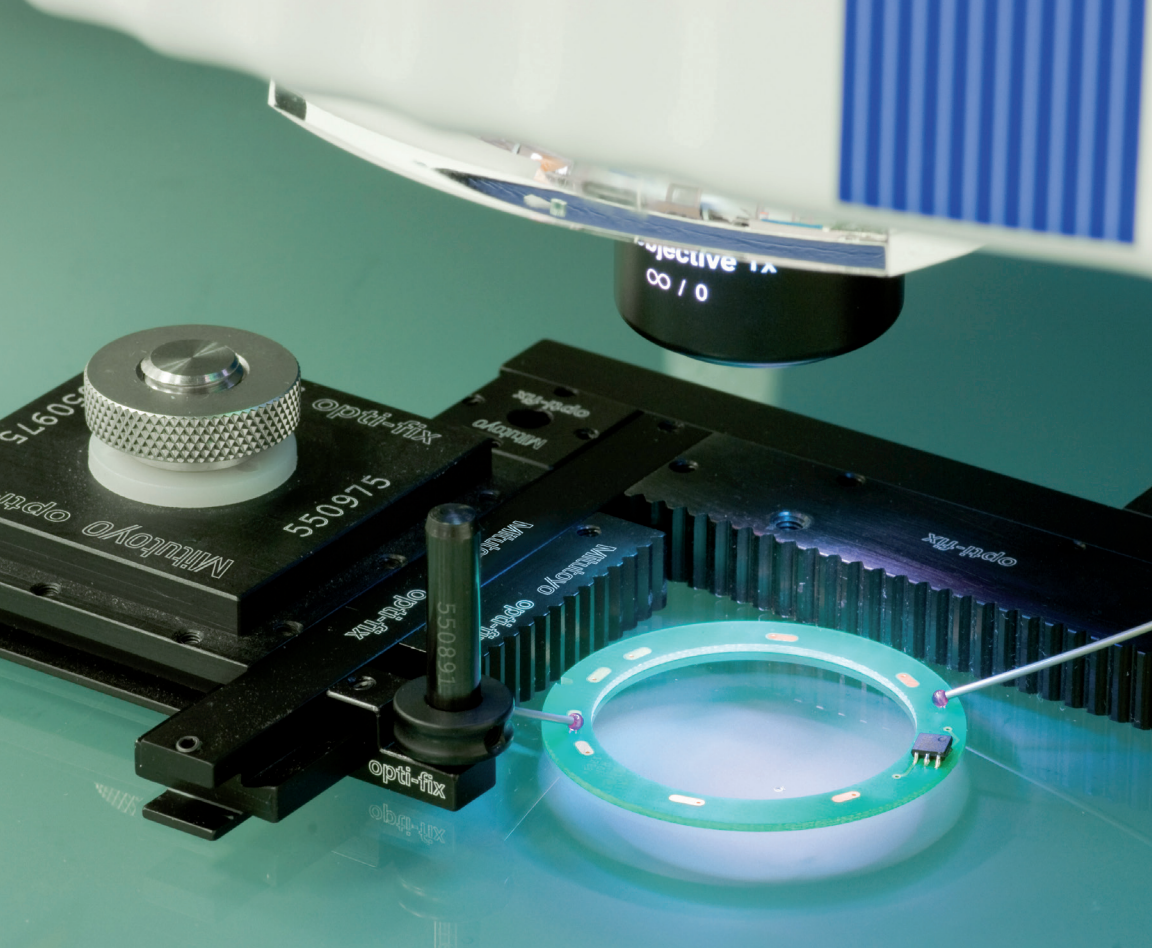
All data collected within a Real-Time run is related. Often, especially for runs containing a large volume of subgroups, requests are made for subsets of data that are further related from the entire runs' population. MeasurLink provides robust filtering capabilities to comply with these requests.



MeasurLink®

An Integrated Solution for Quality Data Management

www.measurlink.com

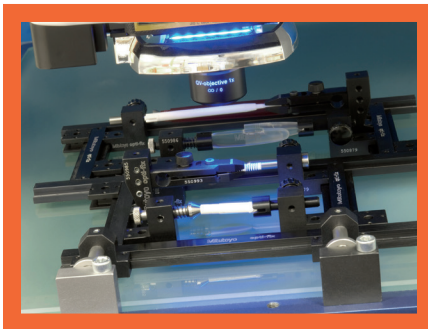
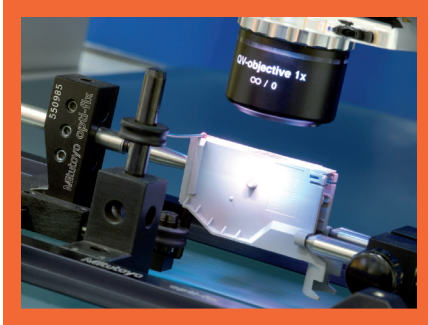


MITUTOYO OPTI-FIX OPTICAL CMM FIXTURING SYSTEM

The modular clamping system, Mitutoyo Opti-fix has been developed specifically for optical coordinate measuring systems. It satisfies safe part workholding for measurement and consequently, ensures a permanent error-free transfer of measured values. This functional configuration makes measurements considerably easier. In order to reduce disturbing reflections of lighting systems and ambient light to a minimum, all important construction elements are anodized in a flat-black or matte finish. Increased multiple part loading is possible with optional components and setup available from a full line of component offerings.

MITUTOYO OPTI-FIX STARTER FIXTURE KIT

The Starter Kit, consists of 16 parts, for construction of a simple rail system with a length of 250 MM, for fixing parts with a simple part geometry. A suction type vacuum component is supplied to provide an initial method to affix the fixture to the glass table. Fastening brackets, additional vacuum plates or magnetic holders for mounting the clamping system on the measuring machine, can be ordered separately.



MITUTOYO OPTI-FIX KIT S

PART #	QTY	PART NAME
550838	1	CONNECTOR CLAMP PROFILE RAIL; L = 100 MM
550854	1	CLAMPING PROFILE RAIL WITHOUT SLOT; L = 250 MM
550842	1	CONNECTOR WITH CONNECTOR GROOVES
550853	3	CLAMPING FIXTURE (WITH THREAD M4)
550891	3	STRAIGHT PIN FOR HOLDING-DOWN DEVICES; L = 30 MM
550845	2	TOOTHED FIXTURE L = 40 MM
550843	1	TOOTHED FIXTURE L = 100 MM
550848	1	SPRING CLIP 30° SHORT
550869	2	SPRING CLIP 30° LONG
550870	1	SPRING CLIP 15° SHORT
551020	1	ALLEN KEY 1.5 MM
	16	





MITUTOYO INSTITUTE OF METROLOGY

The Mitutoyo Institute of Metrology provides training and metrology seminars on topics ranging from basic principles of metrology to advanced QC studies. We are the premier educational facility within the quality field. Our seminars are led by experienced, industry-leading professionals at locations across the US. You can even arrange for a seminar to be held at your own facility. All courses are approved for CEU credits (Continued Education Units) and include a certificate of attendance.

To register, please call the Education Department at **888-MITUTOYO** or email: mim@mitutoyo.com

All seminars begin at 9:00 am and conclude at 4:00 pm. Lunch is provided with every seminar, along with beverages and refreshments.

To view a current schedule visit: <http://www.mitutoyo.com/support/mitutoyo-institute-of-metrology/>

Your Gold Care issued certificate is for our core course, "Dimensional Metrology", a two day class available at one of our many M³ Solution Centers.

If you are unable to attend your Gold Care issued course, you can redeem the certificate for a copy of our metrology handbook. For further information please call the Education Department at **888-MITUTOYO** or email: mim@mitutoyo.com





QV APEX TP SERIES

QV APEX TP SERIES

Gold Care Program*

- A “Second Year” Extended Warranty
- Two-year “Bronze” Calibration Agreement
- Five-year Software Technical Phone Support
- One seat at Mitutoyo Institute of Metrology Class**
- MeasurLink® Pro Edition Quality Data Management Software
- MITUTOYO Opti-Fix Starter Fixture Kit
- MITUTOYO Starter Stylus Kit

*Complete program details are available upon request. ** New addition to Gold Care.

A “SECOND YEAR” EXTENDED WARRANTY*

Mitutoyo built products are among the finest in the industry. With significant uptime and low failure rates, you can have confidence in your capital equipment investment. To reinforce our commitment to our customers, we are offering a total of 24 months parts and labor warranty on selected CMM/Vision units.



**Refer to warranty terms and conditions*



TWO-YEAR BRONZE CALIBRATION AGREEMENT

Mitutoyo Service Agreements are designed to provide responsive and reliable service. Our service engineers are fully trained in the operation and servicing of Mitutoyo CMM/Vision products, so as to provide the very best service to our customers. Not only does Mitutoyo offer A2LA accredited service on all capital equipment, Mitutoyo is one of the only companies in the United States whose field service and calibration labs offer ISO 17025 accredited services.

Field Service Agreements cover the following:

- One Annual recalibration/Check-up per year for the duration of the agreement
- A2LA Accredited Calibration and Certification
- All travel related expenses are included with this agreement, such as hotel, meals, and local travel (airfare is not included)
- A Field Service Calibration includes machine cleaning and inspection of all critical mechanics; along with linear, volumetric and repeatability tests





FIVE-YEAR SOFTWARE TECHNICAL PHONE SUPPORT

If your machine goes down, you need answers fast. Mitutoyo leads the industry with responsive and knowledgeable technical phone support for every Gold Care CMM/Vision purchase. Customers and distributors alike can call our software application support professionals. Our staff of highly-skilled engineers and technicians possess a wealth of knowledge on all Mitutoyo products and can provide detailed product information, answer your specific technical request and offer many types of application guidance. Often they will connect with you to gain a bigger picture and answer your specific programming or operational issue.

Many questions can be answered at our KnowledgeBase for capital equipment applications (i.e. Frequently Asked Questions). Visit our service page at <http://kb.mitutoyo.com/Capital>. Call our technical support staff at **888-648-8869/630-820-9785**. Or email our support staff at software.support@mitutoyo.com.

Of course, comprehensive introductory training is supplied with your Mitutoyo CMM/Vision purchase. Additionally our staff can help you tailor specific training through our nationwide set of Product Instructors or in conjunction with the comprehensive courses developed by our Mitutoyo Institute of Metrology.



MEASURLINK® REAL-TIME PROFESSIONAL EDITION

REAL-TIME DATA COLLECTION

MeasurLink Real-Time performs a data acquisition by enabling you to connect and acquire data from virtually any measuring device. It supports a full range of metrology technology, including calipers, micrometers, indicators, CMMs, Vision systems and more.

REAL-TIME PROFESSIONAL EDITION

Designed for customers who want to acquire and analyze data in real-time and use variable inspection to maximize production and minimize defects. It has functions that allow the user to create Parts, Characteristics (with nominal and tolerance) and Traceability lists. The data collection interface provides real-time graphics for Run charts, Control charts, Histograms and Statistics. Standard views include Datasheet (observations and charts), Classic View (chart windows), and 2D view (part images with callouts that include charts and statistical data) along with an especially customizable Info View and additional Manager views. Full reporting template functionality and Data Export is also provided.

DDE CONNECTION

DDE connection enables customers to connect and acquire data from Measuring Systems via native integration. ASCII and QMD (xml-based) file import are also supported.

IMPORT TEMPLATES

Easily create an import template that maps data in a text file to MeasurLink information. Templates are saved to the database for everyone to use and can be added as data sources to data collection stations. When set up as a data source, import templates are readily available to the operator, or periodic imports can be executed.

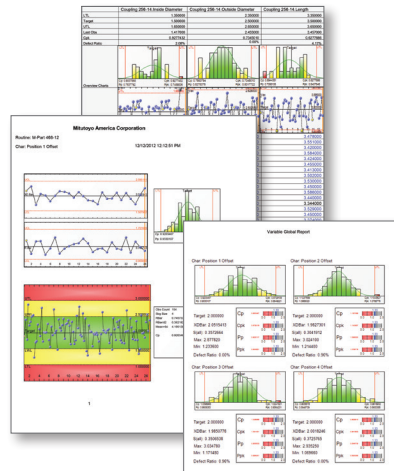


DIRECT DATA TRANSFER

Collect data into MeasurLink from Mitutoyo capital equipment running Mitutoyo Software that is MeasurLink enabled. This provides a tighter and more robust interface than importing data from files.

FILTER DATA

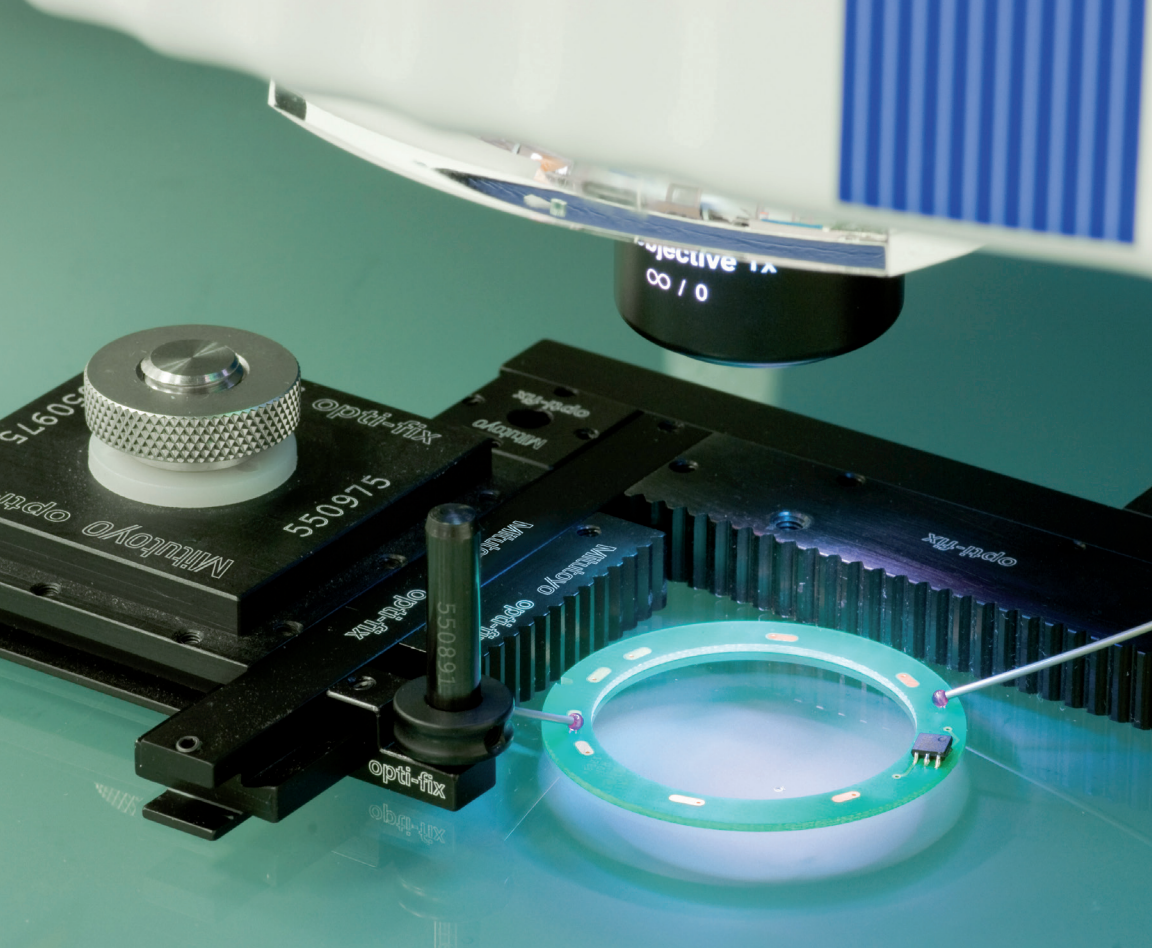
All data collected within a Real-Time run is related. Often, especially for runs containing a large volume of subgroups, requests are made for subsets of data that are further related from the entire runs' population. MeasurLink provides robust filtering capabilities to comply with these requests.



MeasurLink®

An Integrated Solution for Quality Data Management

www.measurlink.com

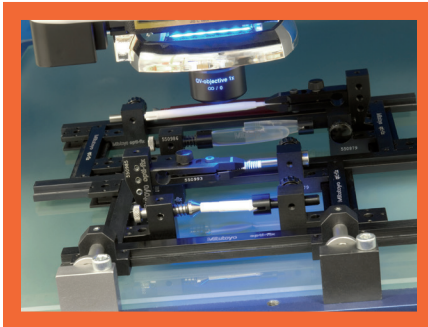
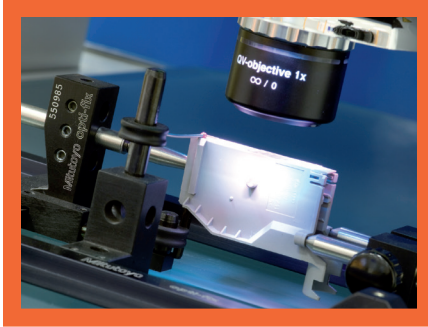


MITUTOYO OPTI-FIX OPTICAL CMM FIXTURING SYSTEM

The modular clamping system, Mitutoyo Opti-fix has been developed specifically for optical coordinate measuring systems. It satisfies safe part workholding for measurement and consequently, ensures a permanent error-free transfer of measured values. This functional configuration makes measurements considerably easier. In order to reduce disturbing reflections of lighting systems and ambient light to a minimum, all important construction elements are anodized in a flat-black or matte finish. Increased multiple part loading is possible with optional components and setup available from a full line of component offerings.

MITUTOYO OPTI-FIX STARTER FIXTURE KIT

The Starter Kit, consists of 16 parts, for construction of a simple rail system with a length of 250 MM, for fixing parts with a simple part geometry. A suction type vacuum component is supplied to provide an initial method to affix the fixture to the glass table. Fastening brackets, additional vacuum plates or magnetic holders for mounting the clamping system on the measuring machine, can be ordered separately.



MITUTOYO OPTI-FIX KIT S

PART #	QTY	PART NAME
550838	1	CONNECTOR CLAMP PROFILE RAIL; L = 100 MM
550854	1	CLAMPING PROFILE RAIL WITHOUT SLOT; L = 250 MM
550842	1	CONNECTOR WITH CONNECTOR GROOVES
550853	3	CLAMPING FIXTURE (WITH THREAD M4)
550891	3	STRAIGHT PIN FOR HOLDING-DOWN DEVICES; L = 30 MM
550845	2	TOOTHED FIXTURE L = 40 MM
550843	1	TOOTHED FIXTURE L = 100 MM
550848	1	SPRING CLIP 30° SHORT
550869	2	SPRING CLIP 30° LONG
550870	1	SPRING CLIP 15° SHORT
551020	1	ALLEN KEY 1.5 MM
	16	





MITUTOYO STARTER STYLUS KIT

The Mitutoyo Starter Stylus Kit specified for the Gold Care Program enables you to develop probing solutions for applications on your CMM or Vision system. Mitutoyo ruby-tipped probes can offer the combination of performance and versatility for your hardest measurement applications due to its overall hardness/low density design (helps keep the probe tip as small as possible for application diversity) and ability to eliminate false triggers caused by CMM movement/vibration. *(Additional probe styles and configurations are also available. Please contact your factory representative.)*

- Mitutoyo M2 Starter Stylus Kit - Total of four ruby tipped/steel shafted probes (various ball dimensions and shaft lengths), two probe extensions and a pin spinner



K651376 - MITUTOYO M2 STARTER STYLUS KIT

PART #	QTY	DESCRIPTION	Ø(MM)	L(MM)	ML(MM)	WT.(G)	#
	1	WOODEN BOX	-	-	-	-	-
K651012	1	STYLUS STEEL-RUBY M2	1	10	4.5	0.23	1
K651019	1	STYLUS STEEL-RUBY M2	2	20	14	0.43	2
K651021	1	STYLUS STEEL-RUBY M2	3	20	17.5	0.51	3
K651022	1	STYLUS STEEL-RUBY M2	4	20	20	0.51	4
K651038	1	EXTENSION STEEL M2	-	10	-	0.41	5
K651039	1	EXTENSION STEEL M2	-	20	-	0.96	6
K651223	2	PIN SPANNER	1.2	23	-	0.51	7

TP20 probe is not included with the M2 Stylus Kit.





MITUTOYO INSTITUTE OF METROLOGY

The Mitutoyo Institute of Metrology provides training and metrology seminars on topics ranging from basic principles of metrology to advanced QC studies. We are the premier educational facility within the quality field. Our seminars are led by experienced, industry-leading professionals at locations across the US. You can even arrange for a seminar to be held at your own facility. All courses are approved for CEU credits (Continued Education Units) and include a certificate of attendance.

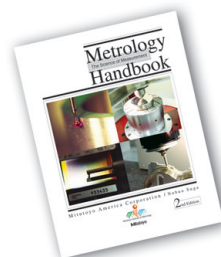
To register, please call the Education Department at **888-MITUTOYO** or email: mim@mitutoyo.com

All seminars begin at 9:00 am and conclude at 4:00 pm. Lunch is provided with every seminar, along with beverages and refreshments.

To view a current schedule visit: <http://www.mitutoyo.com/support/mitutoyo-institute-of-metrology/>

Your Gold Care issued certificate is for our core course, "Dimensional Metrology", a two day class available at one of our many M³ Solution Centers.

If you are unable to attend your Gold Care issued course, you can redeem the certificate for a copy of our metrology handbook. For further information please call the Education Department at **888-MITUTOYO** or email: mim@mitutoyo.com



Mitutoyo America Corporation

www.mitutoyo.com

One Number to Serve You Better

1-888-MITUTOYO (1-888-648-8869)

Bulletin No. 2137(2)

M³ Solution Centers

Aurora, Illinois (Headquarters)

Boston, Massachusetts

Huntersville, North Carolina

Mason, Ohio

Plymouth, Michigan

City of Industry, California

Birmingham, Alabama

Renton, Washington

Houston, Texas

Note: All information regarding our products, and in particular the illustrations, drawings, dimensional and performance data contained in this printed matter as well as other technical data are to be regarded as approximate average values. We therefore reserve the right to make changes to the corresponding designs. The stated standards, similar technical regulations, descriptions and illustrations of the products were valid at the time of printing. In addition, the latest applicable version of our General Trading Conditions will apply. Only quotations submitted by ourselves may be regarded as definitive. Mitutoyo products are subject to US Export Administration Regulations (EAR). Re-export or relocation of our products may require prior approval by an appropriate governing authority.

We reserve the right to change prices, specifications, agreements, terms and conditions at anytime without notice.

Trademarks and Registrations

Designations used by companies to distinguish their products are often claimed as trademarks. In all instances where Mitutoyo America Corporation is aware of a claim, the product names appear in initial capital or all capital letters. The appropriate companies should be contacted for more complete trademark and registration information.