

Pocket ML Version 2.0

Powerful Mobile Data Collection and Analysis



MeasurLink® Pocket ML

Mobile Data Acquisition and Monitoring

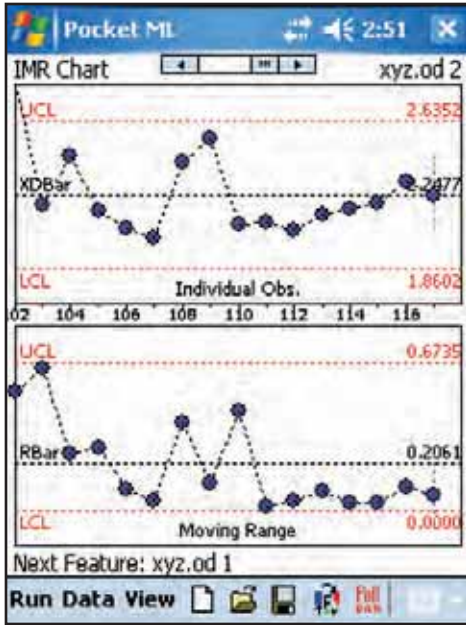
Microsoft
GOLD CERTIFIED
Partner

ISV/Software Solutions
Networking Infrastructure Solutions
Information Worker Solutions

- Designed for mobile data collection, powered by the Microsoft Windows for Mobile platform.
- Full function SPC data collection software designed for portable data collection and event logging.
- Collects measurements from a single gage and supports timed input. Inspection data can be imported into MeasurLink® SPC Real-Time, MeasurLink® SPC Real-Time PLUS, MeasurLink® Process Analyzer and, as a formatted text file, into Microsoft Excel or Word, via the Pocket PC connection cable.
- Connect gages with SPC output to the Pocket ML using standard Mitutoyo SPC Cable.

Learn more at www.MeasurLink.com

Mitutoyo
Precision is our Profession



SBG ID	OBS. 1
102	2.8381
103	2.1921
104	2.4447
105	2.1626
106	2.0653
107	2.0229
108	2.4166
109	2.5356
110	2.0853
111	2.0987
112	2.0594
113	2.1432
114	2.1753
115	2.2041
116	2.3104
117	2.2398

Statistics

- Mean (Average)
- R-Bar
- Maximum value
- Cp
- Pp
- % Defects
- Mean + 3 sigma
- Mean + 4 sigma
- Mean + 6 sigma
- Sigma value
- R-Bar / d2
- Minimum value
- Cpk
- Ppk
- PPM defects
- Mean – 3 sigma
- Mean – 4 sigma
- Mean – 6 sigma

Charting

- IMR
- X-Bar & R
- X-Bar & S
- Precontrol
- Observations
- Histogram
- Statistics
- Combo charting

Includes

- Carrying pouch for IPAQ PDA
- Single gage multiplexer (Input Tool code 264-012-10) can be used with foot switch (code 937179T, optional purchase)
- CF USB port for gage multiplexer

Saves Data

- MRT files – for importing into MeasurLink Real-Time or Real-Time PLUS programs
- Text files – for importing into Excel, Word, Notepad, etc. (data only)

Note: All information regarding our products, and in particular the illustrations, drawings, dimensional and performance data contained in this printed matter as well as other technical data are to be regarded as approximate average values. We therefore reserve the right to make changes to the corresponding designs. The stated standards, similar technical regulations, descriptions and illustrations of the products were valid at the time of printing. In addition, the latest applicable version of our General Trading Conditions will apply. Only quotations submitted by ourselves may be regarded as definitive.

Mitutoyo products are subject to US Export Administration Regulations (EAR). Re-export or relocation of Mitutoyo products may require prior approval by an appropriate governing authority.

Trademarks and Registrations

Designations used by companies to distinguish their products are often claimed as trademarks. In all instances where Mitutoyo America Corporation is aware of a claim, the product names appear in initial capital or all capital letters. The appropriate companies should be contacted for more complete trademark and registration information.

We reserve the right to change specifications and prices without notice.

PocketML Packages

MeasurLink® PocketML (982-555B)

- PocketML version 2.0
- HP iPAQ hx2495 (See below)
- USB Input Tool
- USB CF Card
- USB Cable and Adapter

MeasurLink® PocketML Base Package (50AAD408A)

- PocketML version 2.0
- USB Input Tool
- USB CF Card
- USB Cable and Adapter

HP iPAQ hx2495 features

Genuine Windows Mobile 5.0 Software for Pocket PC, Premium Edition

Intel PXA270 processor 520MHz

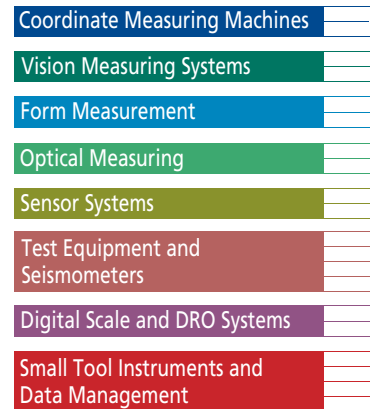
256 MB total memory (192 MB ROM 64 MB RAM);

Integrated SD and CF slot

Wi-Fi (802.11b) and Bluetooth wireless technology

Size: 3.01 x 0.65 x 4.71 in

Weight: 5.80 oz.



Mitutoyo America Corporation

www.mitutoyo.com

One Number to Serve You Better
1-888-MITUTOYO (1-888-648-8869)

Mitutoyo
Precision is our Profession