

2-D Color Vision Measuring System Quick Image Series

One-click instant measurement



Mitutoyo Corporation
80th Anniversary
Since 1934

Vision Measuring Systems



Bulletin No. 2152



Mitutoyo

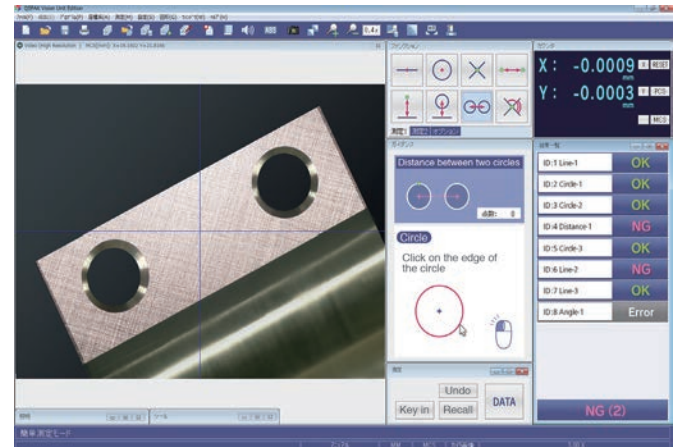
2-D Color Vision Measuring System Quick Image Series



FEATURES

- Many simultaneous measurements can be executed with a single click.
- An illustrated guidance tool provides instructions for carrying out measurement.
- High-resolution images enable smooth observation and measurement.
- Icon based macros for maximum ease of use.
- Alignment of workpiece is automatically located via pattern recognition.
- Provides quick results of features (GO/NG/PASS/FAIL).

QIPAK Simple Mode



SPECIFICATIONS

Model		QI-A1010C	QI-A2010C	QI-A2017C	QI-A3017C	QI-A4020C
View field		1.26"x0.94" (32x24mm)				
Measurement mode		High resolution mode / Normal mode				
Measuring range (X, Y axis)		3.94"x3.94" (100x100mm)	7.87"x3.94" (200x100mm)	7.87"x6.69" (200x170mm)	11.81"x6.69" (300x170mm)	15.75"x7.87" (400x200mm)
Travel range (Z axis)		3.94" (100mm)				
Accuracy *1	Measurement accuracy within the screen	High resolution mode: $\pm 5\mu\text{m}$ / Normal mode: $\pm 8\mu\text{m}$				
	Repeatability within the screen ($\pm 2\sigma$)	High resolution mode: $\pm 1\mu\text{m}$ / Normal mode: $\pm 2\mu\text{m}$				
	Measurement accuracy (U1xy)	$\pm(5+0.08L)\mu\text{m}$ L: arbitrary measuring length (mm)				
Imaging device		3M pixel, Color camera				
Optical system	Magnification (Telecentric Optical System)	0.2x				
	Working distance	90mm				
	Depth of focus	High resolution mode: $\pm 0.6\text{mm}$ / Normal mode: $\pm 1\text{mm}$				
Illumination		Transmitted light: Green LED telecentric illumination; Co-axial Light: White LED; Ring light: quadrant white LED				
Accuracy guaranteed temperature		20 \pm 1°C				

*1 Inspected by Mitutoyo standard.

Mitutoyo America Corporation
www.mitutoyo.com
One Number to Serve You Better
1-888-MITUTOYO (1-888-648-8869)

M³ Solution Centers
Aurora, Illinois
(Corporate Headquarters)
Westford, Massachusetts
Huntersville, North Carolina
Mason, Ohio

Plymouth, Michigan
City of Industry, California
Birmingham, Alabama
Renton, Washington
Houston, Texas

- Coordinate Measuring Machines
- Vision Measuring Systems
- Form Measurement
- Optical Measuring
- Sensor Systems
- Testing Equipment and Seismometer
- Digital Scale and DRO Systems
- Small Tool Instruments and Data Management

Note: All information regarding our products, and in particular the illustrations, drawings, dimensional and performance data contained in this printed matter as well as other technical data are to be regarded as approximate average values. We therefore reserve the right to make changes to the corresponding designs. The stated standards, similar technical regulations, descriptions and illustrations of the products were valid at the time of printing. In addition, the latest applicable version of our General Trading Conditions will apply. Only quotations submitted by ourselves may be regarded as definitive.

Mitutoyo products are subject to US Export Administration Regulations (EAR). Re-export or relocation of our products may require prior approval by an appropriate governing authority.

Trademarks and Registrations

Designations used by companies to distinguish their products are often claimed as trademarks. In all instances where Mitutoyo America Corporation is aware of a claim, the product names appear in initial capital or all capital letters. The appropriate companies should be contacted for more complete trademark and registration information.